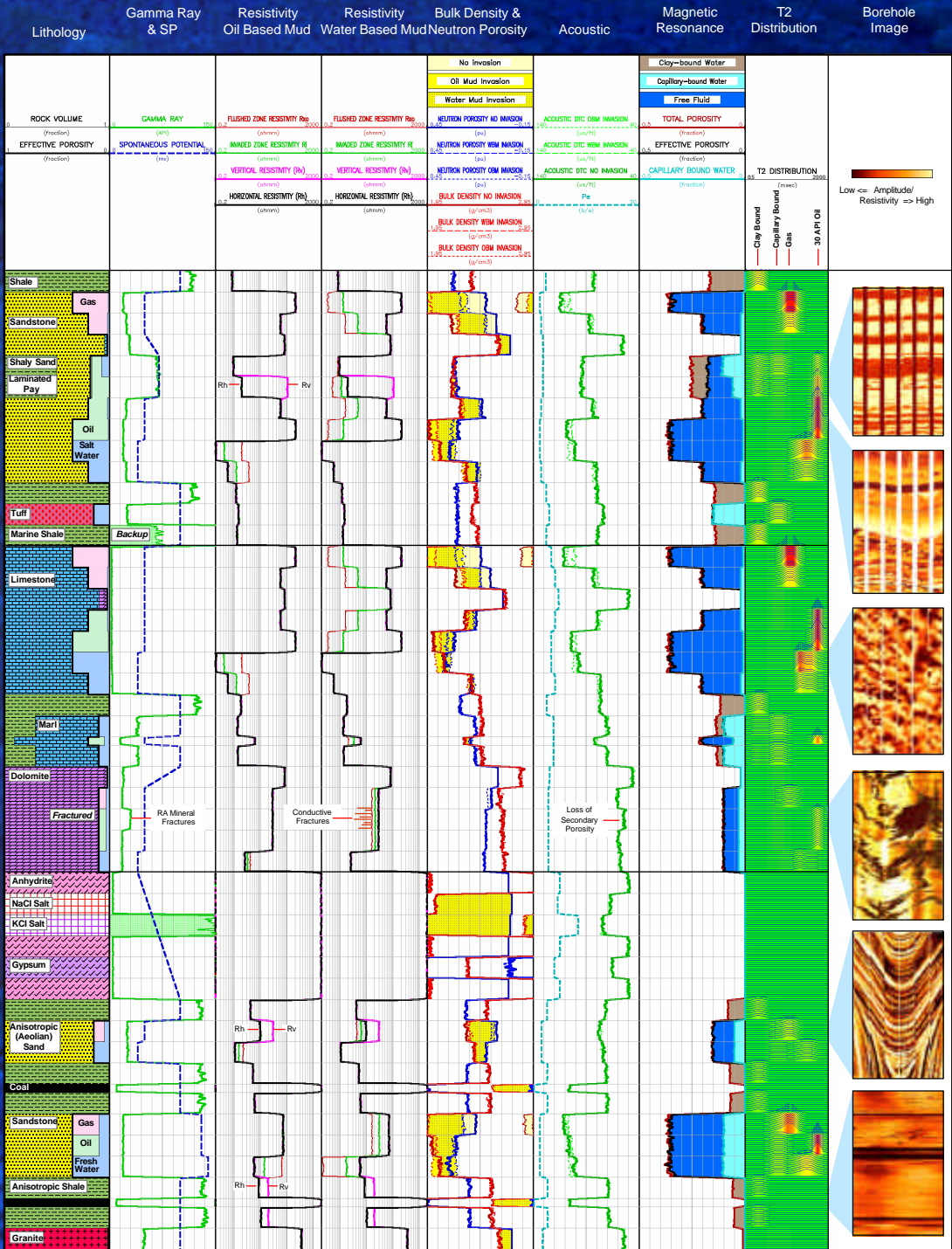


Atlas of Log Responses



General Log Matrix

| Lithology | GR | Density | Neutron | Acoustic | Resistivity | PE |
|-----------|-------|---------|---------|----------|-------------|------|
| Sandstone | Low | 2.65 | -4 | B | High | 1.81 |
| Limestone | Low | 2.71 | 0 | 475 | High | 5.08 |
| Shale | High | 2.327 | High | 50-100 | Low | 1-5 |
| Dolomite | Low | 2.87 | +4 | 0 | High | 314 |
| Anhydrite | V.Low | 2.98 | -1 | 50 | V.High | 5.08 |
| Salt | Low | 2.65 | -3 | 0 | V.High | 485 |
| Water | 0 | 1.11 | 100 | 100-150 | 0 | 0.36 |
| Oil | 0 | 0.8-1.0 | 70-100 | 210-245 | V.High | Low |
| Gas | 0 | 0.2-0.5 | 90-95 | -1000 | V.High | Low |

The Changing Face of Formation Evaluation
www.bakerhughesdirect.com
formationevaluation@bakerhughes.com



Baker Atlas
INTEQ
 FORMATION EVALUATION

WE CANNOT, AND WE DO NOT GUARANTEE THE ACCURACY OR CORRECTNESS OF ANY INFORMATION ON THIS CHART. WE SHALL NOT BE LIABLE OR RESPONSIBLE FOR ANY LOSS, COST, DAMAGES OR EXPENSES WHATSOEVER INCURRED OR SUSTAINED BY THE CUSTOMER RESULTING FROM THIS INFORMATION.